



3DTALK DF200

CHAIRSIDE 3D PRINTER



EXTREMELY FAST

Max Printing
Speed 30mm/h



HIGH PRECISION

Max precision
0.03mm



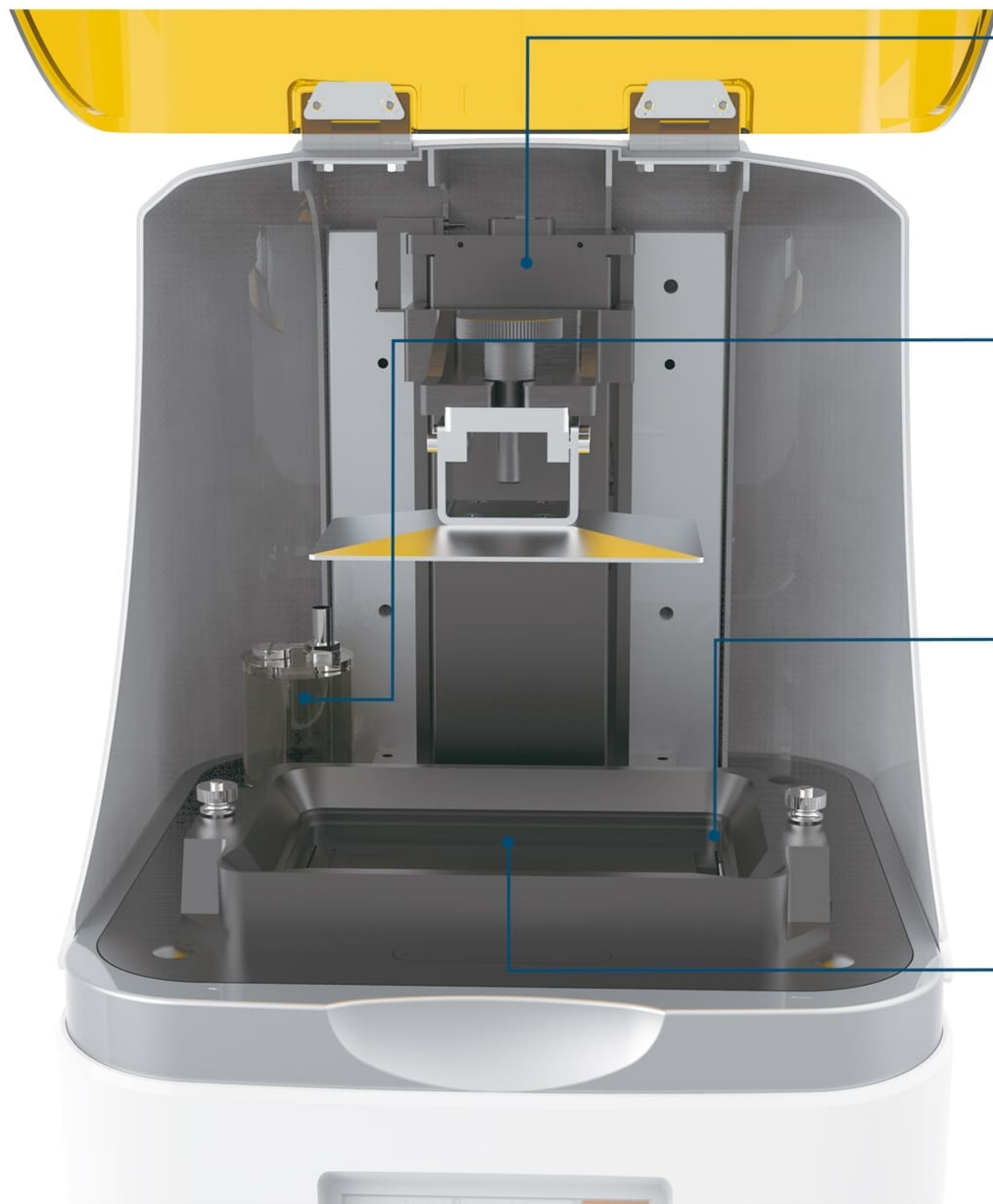
SUPER STEADY

24 hour continuous
steady printing



FIVE CORE SYSTEMS

CHAIRSIDE 3D PRINTER



High precision transmission control System

Double StraightLine + High-precision Ball ScrewRod Double sure printing accuracy.

Double Cooling System

Air Cooling +Liquid Cooling System
Ensure the long and stable operation.

Microarray lens uniform light System

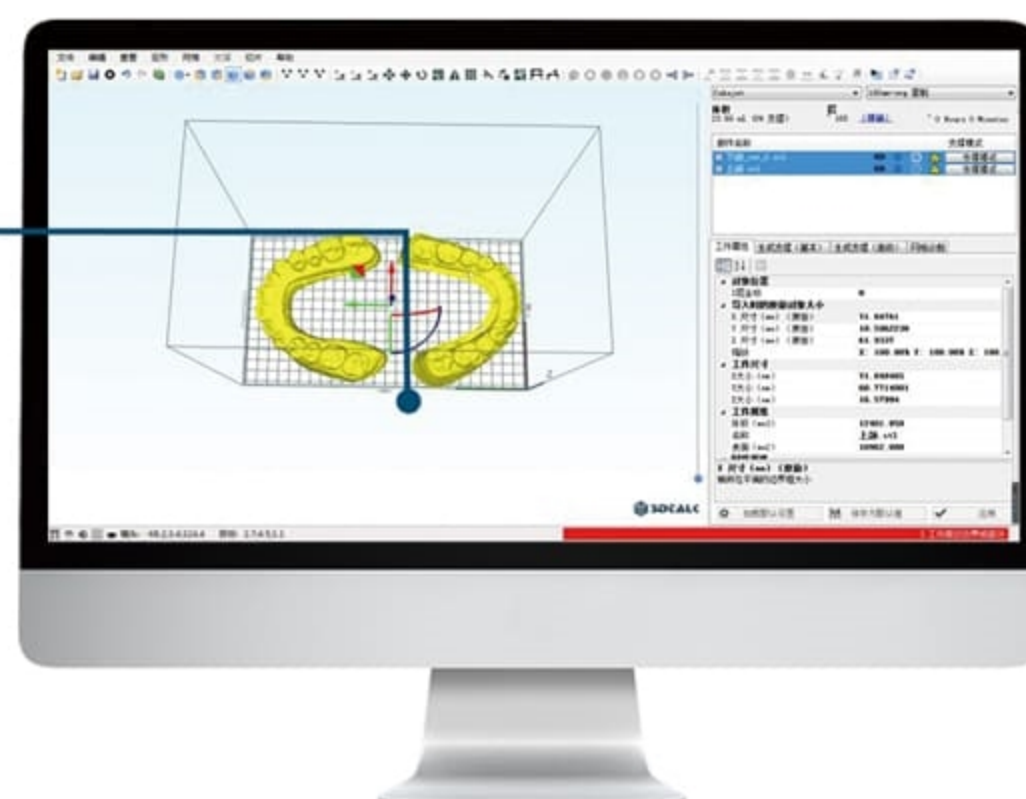
Uniform light+Alignment system Guarantee the consistency and accuracy of the full-page model. 28pc 405nm UV LED arrays with parallel light.

High-performance Photosensitive System

Brand new 6-inch black and white screen+photosensitive system Effectively improveperformance and molding efficiency.

Professional dental model software System

Design + Slice function More smarter and easier.
Support mesh hollowing, drainage holes, lattice infills, automatic generation, add floor structure, auto orientation etc.



01

INTEGRATED RESIN TANK DESIGN

Consumer-grade integrated resin tank.
Save cost and easy to operate

02

SPACE CAPSULE OPEN-TOP DESIGN

The enclosed space capsule with open-top design, is acombination of function and aesthetics

03

DENOISE DESIGN

Adopting module noise reduction design.
Lower than 50db ,
suitable for different working environment

04

ANTI-DUST DESIGN

Professional sealing and dustproof design,
suitable for complex operation environment,
making the printing process more stable and efficient

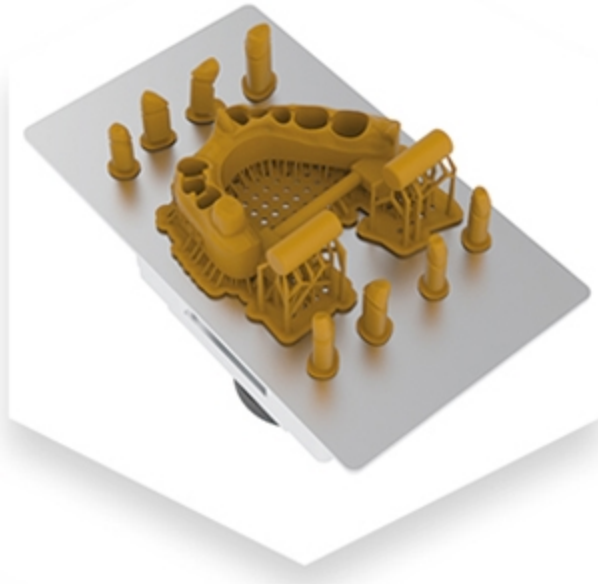
PRODUCT PARAMETERS

CHAIRSIDE 3D PRINTER

Technology	LCD Light Curing
DF200 Size	(L*W*H)= 330 * 330 * 500mm/13 * 13 * 19.6 in
Working Temp	18°C~28°C / 64.4°F ~82.4°F
Build Volume	(X*Y*Z)= 132 * 74 * 132mm / 5.2 * 2.9 * 5.2 in
XY Resolution	50μm 1620*2560 px
Print Layer Thickness	0.016mm,0.025mm,0.05mm,0.1mm(Optional)
Printing Speed	0.05mm layer thickness 30mm/h
Light Source	405 nm UV LED
Interface	USB
Control	5-inch touch screen
File Format	3D Format: STL, OBJ, AMF, PLY etc. Print File: ZIP
Resin Vat	Detachable integrated resin tank(replaceable film)
Cooling System	Liquid Cooling + Air Cooling System
Enclosed	Anti - dust, Anti - static
Printing Resin	Crystal Resin, Dental Ortho Resin, Dental Gum Resin, Dental Model Resin(Water Washable), Casting Resin etc.
Connection	U disk , WIFI
Power Input	AC110/220V 50/60HZ 300W
Operating System	Windows 7 and higher, CPU : Intel i5 and higher, RAM : 4GB and higher, Video card : NVidia series, Video RAM : 1G and higher, support OpenGL4.1

WIDELY DENTAL APPLICATIONS

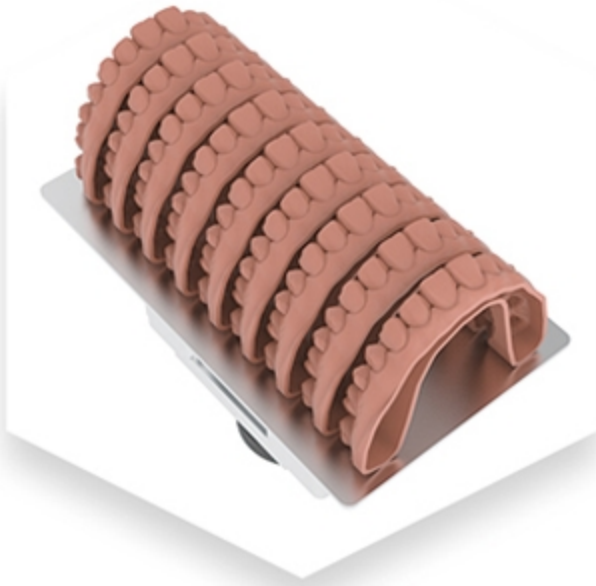
CHAIRSIDE 3D PRINTER



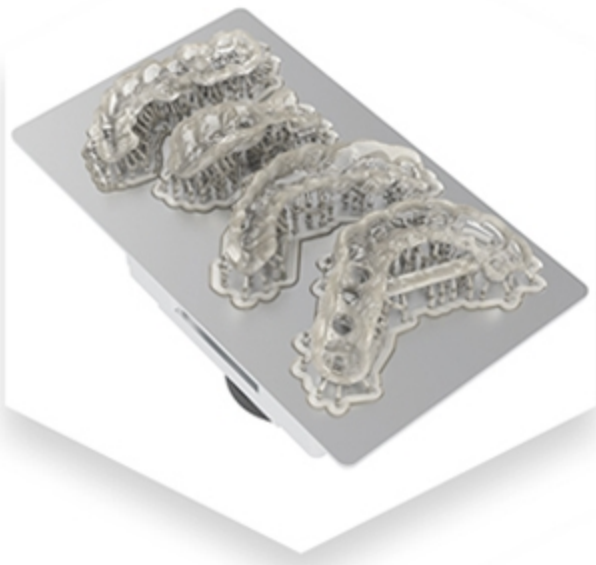
Dental Prosthetic Model



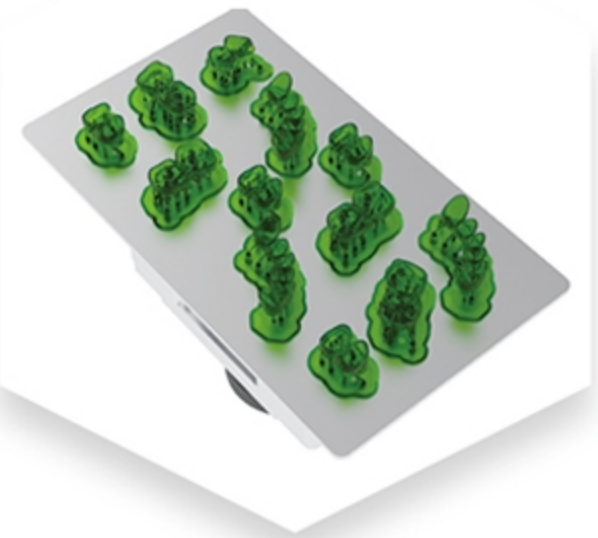
Soft Gum Model



Orthodontic Lamination Model



Implant Guide Model



Casting Frame and Crown



✉ info@ouring.com.cn

☎ +86 513 8563 2888

🌐 www.ouring.com.cn

📍 Building 6, Tian'an Cyber Park, No.199 Shennan Road,
Chongchuan District, Nantong City, Jiangsu Province, China.

