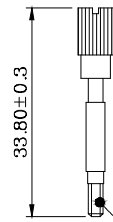


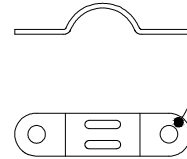
HSF



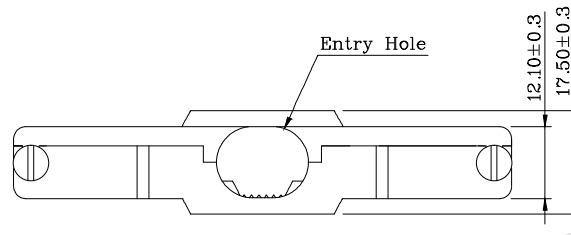
ROHS



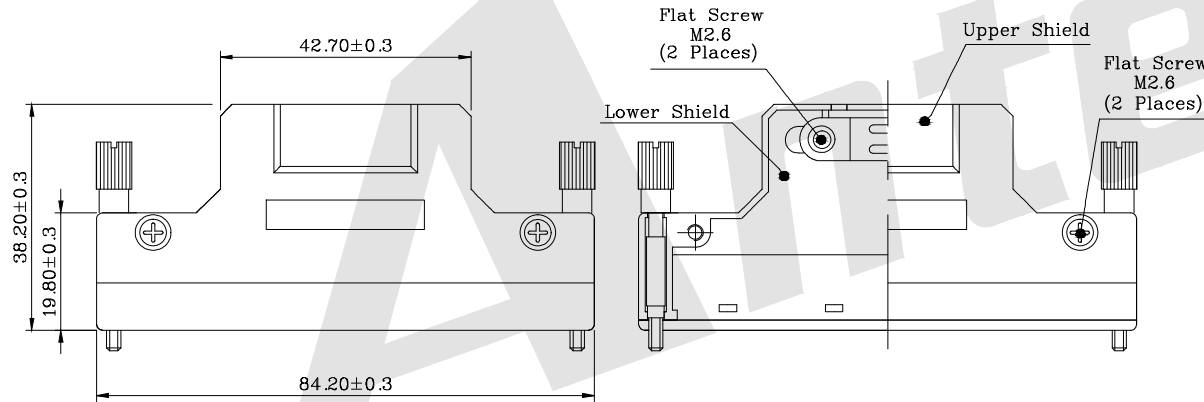
Jackscrew
(2 Places)



Cable Clipper



Entry Hole

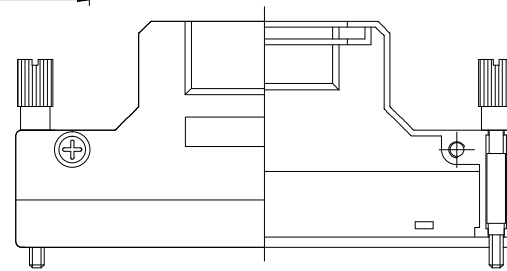
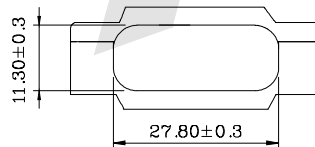


Flat Screw
M2.6
(2 Places)

Upper Shield

Flat Screw
M2.6
(2 Places)

Lower Shield



Y Type

SPECIFICATIONS:

1. Material:

1.1 Back Shell: Zinc Plated Nickel
Over Copper

1.2 Jackscrew: Steel Nickel Plated
Over Copper

1.3 Flat Screw: Steel Nickel Plated
Over Copper

1.4 Cable Clipper: Steel Nickel Plated
Over Copper

Ordering Code:

HPMCS01 - 100 - X - X
① ② ③ ④

① Series No:

③ Entry Hole Sizes:
11=∅11.0 14=∅14.0

② Contact NO.:
100=100P

④ Threaded Finishes:
1: Threaded Insert #2-56
2: Threaded Insert #4-40
3: Threaded Insert M2.6

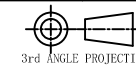
Unless Otherwise specified tolerance
X. ±0.35 X.XX: ±0.20
X.X: ±0.25 X.XXX: ±0.15



ANTENK ELECTRONICS CO., LTD
Http://www.antenk.com
E-mail:sales@antenk.com

SCALE: As Shown	UNIT: mm
DRAW Jack Bao	DATE 8/16/2018
CHECK Bob Yang	DATE 8/16/2018

TITLE: I.27mm Series Shielded Backshell Kits 100P
Straight Exit With Jackscrew



DRAWING NO:HPMCS01-100XX

PRODUCT NO:HPMCS01-100XX

REV	DESCRIPTION	DATE
1		
2		
3		
4		
5		