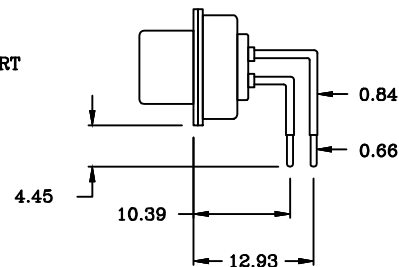
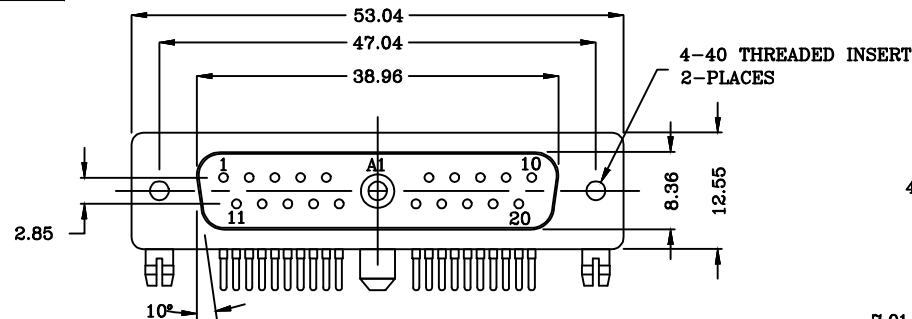
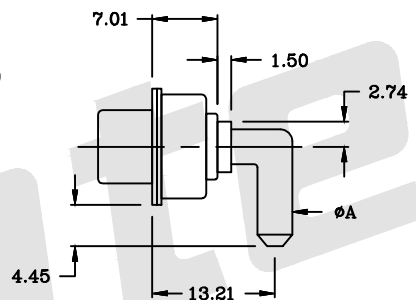
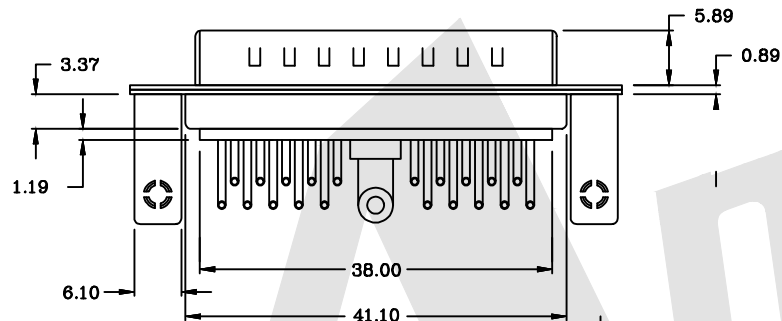


HSF



SIGNAL CONTACTS



SPECIFICATIONS:

ELECTRICAL:

INSULATOR RESISTANCE: 5,000 MegOHMS Min.
DIELECTRIC WITHSTANDING: 1,000 VAC r. m. s.
OPERATING TEMPERATURE: -55°C ~ +125°C
CONTACT RESISTANCE: 30 MILLIOHMS Max.
POWER PINS: SEE PART No. BELOW

MECHANICAL:

CONTACT INSERTION FORCE: 4.5kg Max
CONTACT SEPARATOR FORCE: 0.3kg Min

MATERIALS:

CONTACTS: BRASS
INSULATOR: PBT UL94V-0 RATED, 230°C PROCESS TEMP.

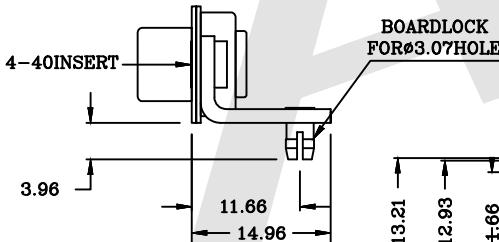
SHELL Material:

SHELL FINISH: STEEL
NICKEL

Ordering Code:

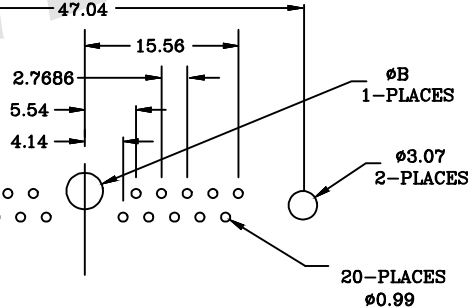
PDR21W1	-M	-G0	-B	-20	-X
①	②	③	④	⑤	⑥

- ① Series
- ② Contact Type:
M:Male F:Female
- ③ Contact NO. :
G0: Gold flash
G1: 3u" Gold
G2: 5u" Gold
G3: 10u" Gold
G4: 15u" Gold
G5: 30u" Gold
- ④ Insulation Color Code:
B:Black L:Blue
W:White
- ⑤ Power AMP:
10 = 10AMPS; 20 = 20AMPS;
30 = 30AMPS; 40 = 40AMPS;
- ⑥ Contact No:
A: without boardlock
B:B:With boardlock with screw(4.8x11.8)
C:With boardlock with screw(5.8x11.8)
D:With boardlock without screw

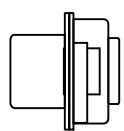


MOUNTING HARDWARE

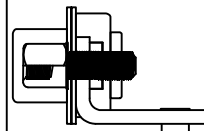
BOARDLOCK FOR 3.07HOLE



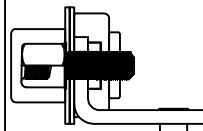
PCB EDGE



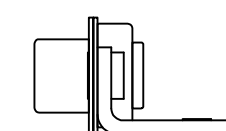
A: without boardlock



B: With boardlock with screw(4.8x11.8)



C: With boardlock with screw(5.8x11.8)



D: With boardlock without screw

Current Rating	Dimension	
	Dimension ø A	Dimension øB
40 AMPS	ø3.75	ø4.20
30 AMPS	ø3.20	ø3.80
20 AMPS	ø2.8	ø3.28
10 AMPS	ø1.7	ø2.20

Unless Otherwise specified tolerance
X. ±0.35 X.XX: ±0.20
X.X: ±0.25 X.XXX: ±0.15

SCALE: As Shown	UNIT: mm
DRAW Lv Xun Hua	DATE 30/04/2019
CHECK BobYang	DATE 30/04/2019



ANTENK ELECTRONICS CO., LTD
Http://www.antenk.com
E-mail:sales@antenk.com

TITLE:
POWER D-SUB 21W1 Right Angle PCB-MALE TYPE

DRAWING NO: PDR21W1-MXXXX

PRODUCT NO: PDR21W1-MXXXX



3rd ANGLE PROJECTION

DESCRIPTION

DATE

REV